

**DESIGNED FOR MILITARY AND CIVILIAN USE WHERE  
A HIGH STANDARD OF PERFORMANCE IS  
REQUIRED BOTH ON AND OFF THE ROAD**



**THE FUTURE OF ALL TERRAIN VEHICLES  
BY STEWART & STEVENSON**





## **VEHICLE SPECIFICATIONS DESIGN CRITERIA COMMON TO 6 × 6 AND 8 × 8 VEHICLES:**

The Stewart & Stevenson All Terrain Vehicle was designed by ESARCO Limited of Great Britain to satisfy vehicle requirements not met by current designed hardware. The Stewart & Stevenson ATV provides a highly mobile, high speed platform for use in demanding on/off road situations. This allows on/off road performance where conventional 4 × 4 or tracked vehicles cannot satisfy task demands. The low ground pressure and additional axles allow this vehicle to go where 4 × 4's cannot. The elimination of high cost, high maintenance track allows our vehicle to go to the job at highway speeds.

The design basis for this vehicle was to produce a vehicle that is built with proven components to maintain reliability, durability, serviceability and economy. The use of off-the-shelf production parts is intended to minimize initial investment and to keep repair cost and downtime to a minimum. The Stewart & Stevenson all wheel drive vehicle requires no special driver skills or training because of the use of conventional operator controls. The vehicles have over 100,000 test miles by ESARCO in Great Britain, Spain, Oman, Malaysia, and Sweden.

The Stewart & Stevenson All Terrain Vehicle was designed with the idea in mind that each user will require adaption of their own special configuration of equipment. Our vehicle is provided as an adaptable platform on which can be mounted an unlimited assortment of variants to do whatever job must be done in hard-to-get-to locations. See accompanying partial list of applications for ideas on how you might use the vehicle.

### **Engine:**

Diesel or gasoline—water or air cooled. 70-200 HP depending on application requirements. Engines available DDA, Land Rover, Ford, I.H., Deutz, V.M., & others.

### **Transmission:**

Automatic or Manual.

### **Transfer Boxes:**

Two transfer cases providing low or high range in all gears. Manual interaxle differential lock.

### **Brakes:**

Servo-assisted hydraulic brakes on all wheels. Disk type on front axle, drum type on following axles. Drum type hand actuated emergency brake on primary transfer case output.

### **Suspension:**

Long travel coil springs with double action shock absorbers on each wheel. Axles located by radius arms and panhard rods.

### **Axles:**

3 or 4 beam type axles incorporating spiral bevel type differentials and full floating axle shafts.

### **Other:**

Pressed steel wheels 10 × 15, power steering, power take-off, instrument panel, driver and passenger seat, winch.

### **Options:**

8000# on/off road trailer package, Amphibious version capable of 6 knots, Tracks for second and third axle, custom cab and deck mounted variance equipment.





## **APPLICATIONS**

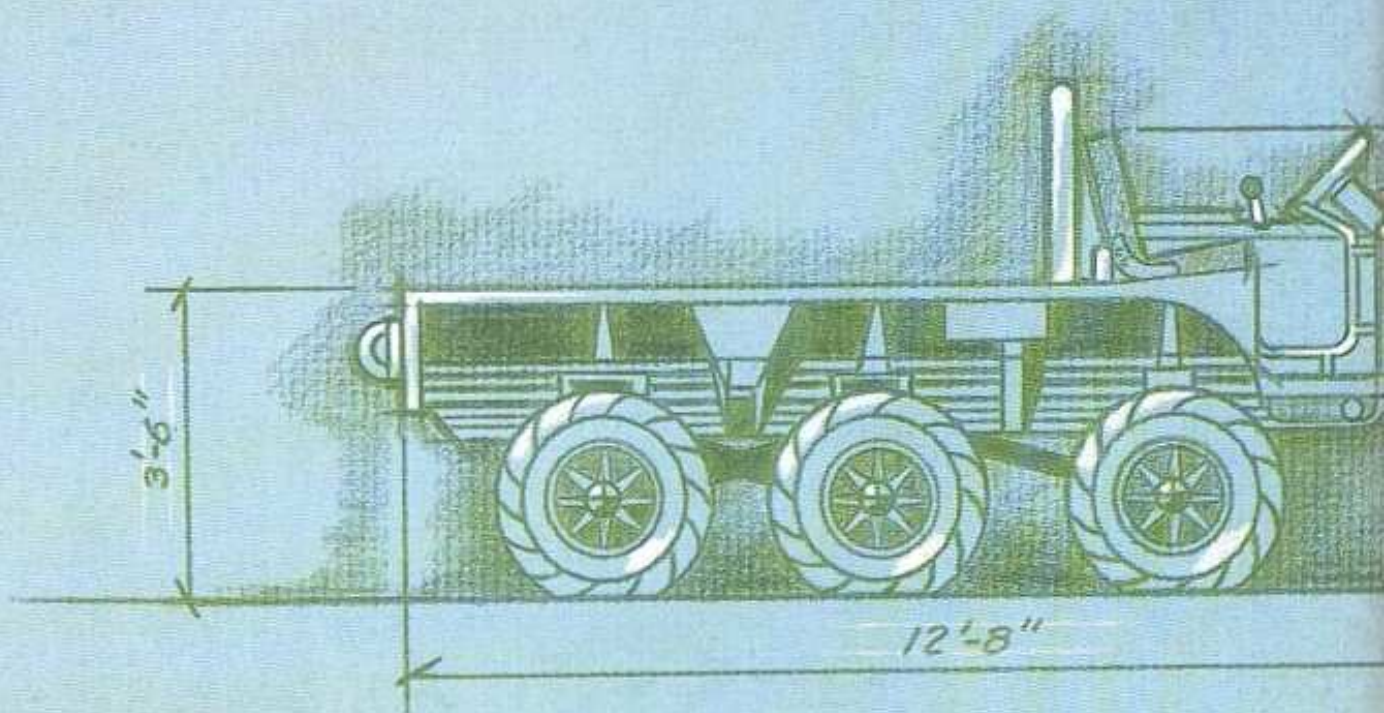
### **MILITARY:**

ARMORED PERSONNEL CARRIER  
MOBILE COMMUNICATIONS CENTER  
TROOP TRANSPORT  
HELICOPTER FIELD SUPPORT  
FUEL/WATER TRANSPORT  
MINE LAYER  
FIREFIGHTER/CRASH TRUCK  
AMBULANCE  
LIGHT GUN TOW VEHICLE  
BORDER PATROL

### **COMMERCIAL:**

SNOWPLOW WITH DUMP BED  
EXCAVATOR  
FIREFIGHTER/CRASH TRUCK  
AMBULANCE  
TRENCHER WITH BLADE  
HYDRAULIC LOG LOADER  
OFF ROAD FIELD SERVICE  
OILER  
SNOW BLOWER  
MOBILE WORKSHOP  
SEISMOGRAPH SUPPORT  
OFF ROAD RECREATIONAL VEHICLE  
CORE DRILLING RIG





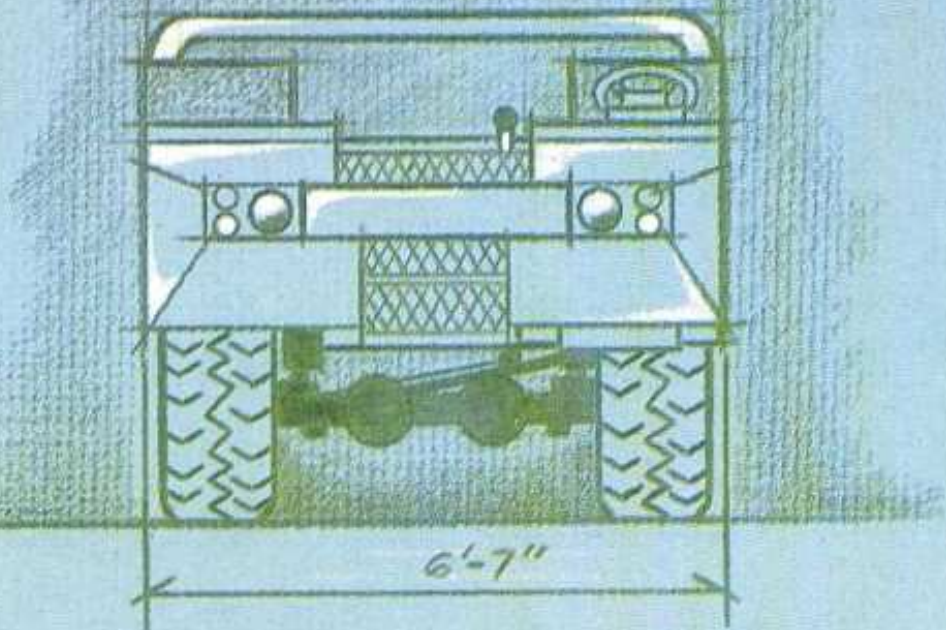




## 6 × 6 SPECIFICATIONS:

Length .....	12'8"
Width .....	6'7"
Height-Top of Seat .....	5'3"
Weight .....	5000#
Payload-Offroad .....	3000#
Track .....	5'2"
Bed Length .....	8'6"
Bed Width .....	6'7"
Bed Height .....	3'6"
Ground Clearance .....	11.5"
Wading Depth .....	31"
Max Gradability .....	45 Degrees
Ramp Brake Over Angle .....	90 Degrees
Approach Angle .....	50 Degrees
Departure Angle .....	50 Degrees
Turning Circle-Inside .....	8'6"
Ground Pressure Empty .....	4.1 PSI
Ground Pressure Loaded .....	5.5 PSI
Highway Speed .....	70 MPH

NOTE: All dimensions and capacities are approximate and will vary depending on component package used in assembly.

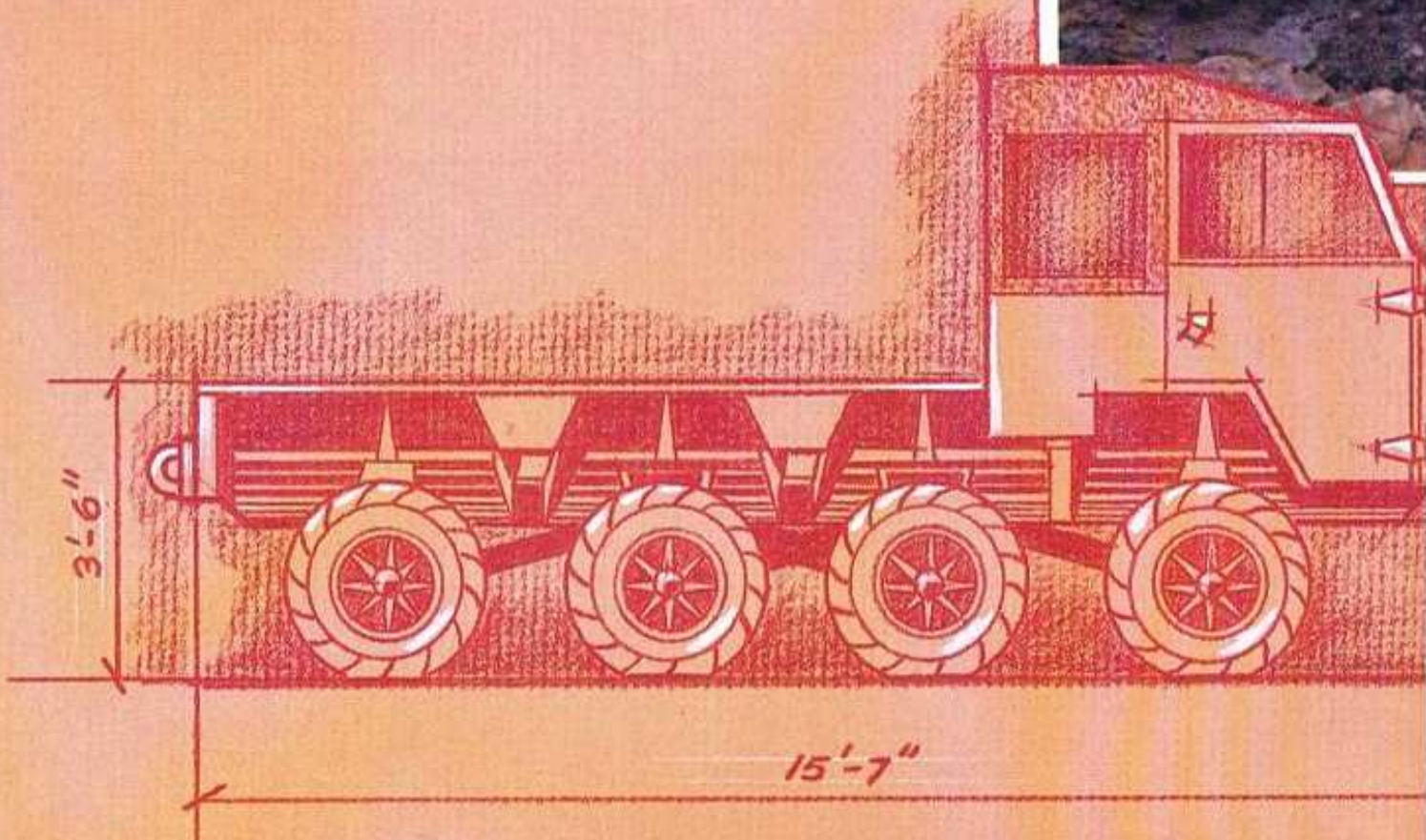
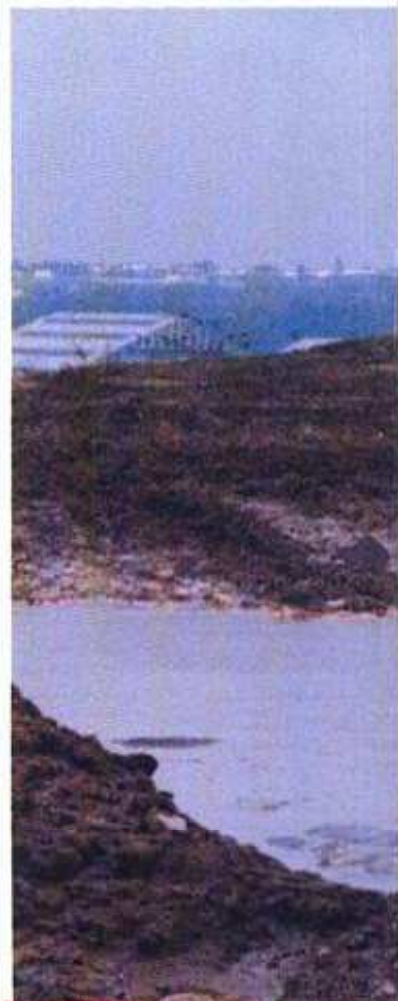




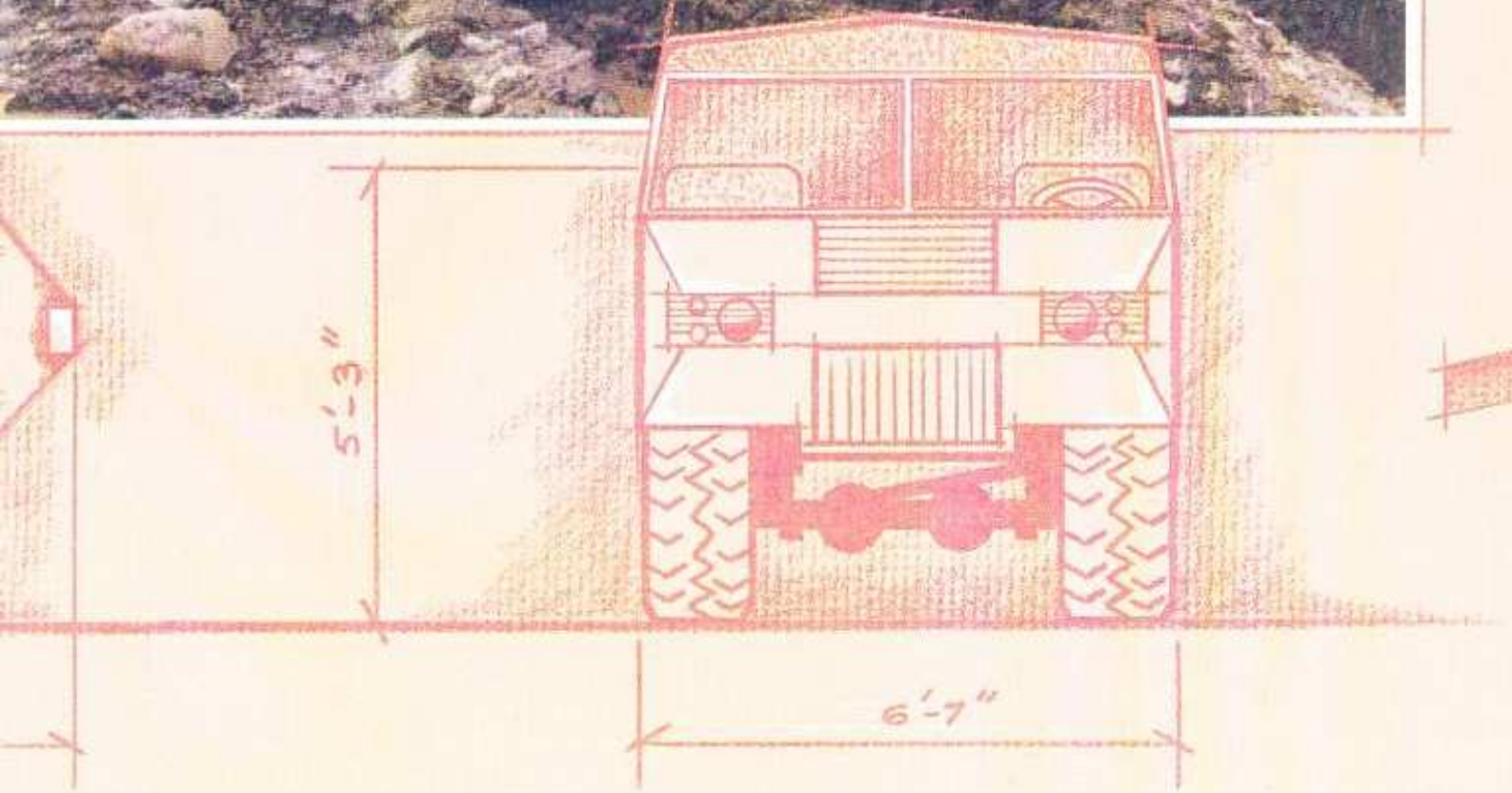
## 8 × 8 SPECIFICATIONS:

Length .....	15'7"
Width .....	6'7"
Height—Top of Seat .....	5'3"
Weight .....	6250#
Payload—Offroad .....	4500#
Track .....	5'2"
Bed Length .....	10'
Bed Width .....	6'7"
Bed Height .....	3'6"
Ground Clearance .....	11.5"
Wading Depth .....	31"
Max Gradability .....	45 Degrees
Ramp Brake Over Angle .....	90 Degrees
Approach Angle .....	50 Degrees
Departure Angle .....	60 Degrees
Turning Circle—Inside .....	9'
Ground Pressure Empty .....	5.5 PSI
Ground Pressure Loaded .....	6.4 PSI
Highway Speed .....	70 MPH

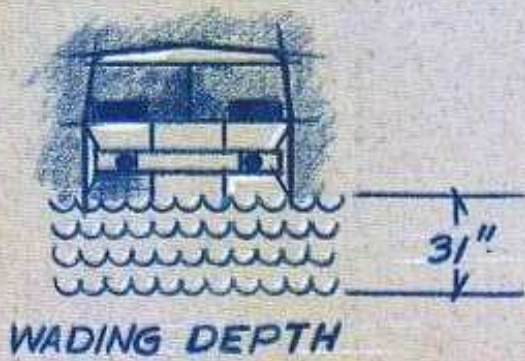
NOTE: All dimensions and capacities are approximate and will vary depending on component package used in assembly.



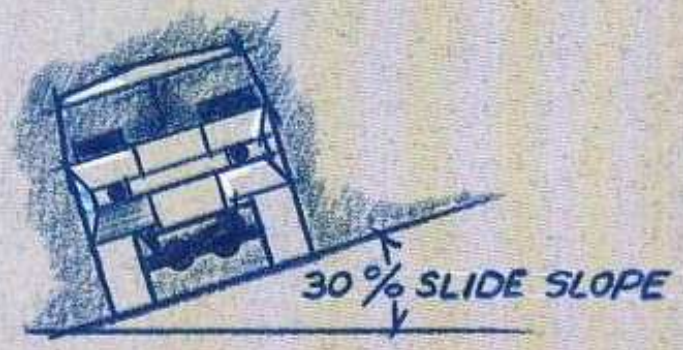




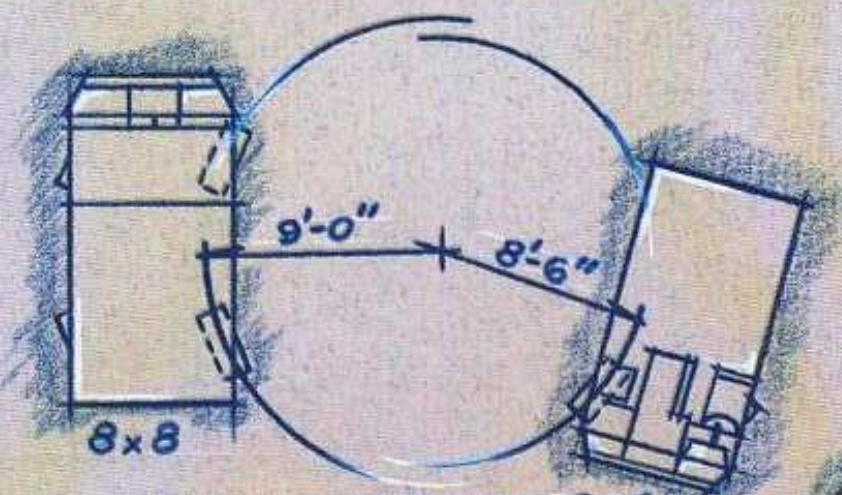




WADING DEPTH



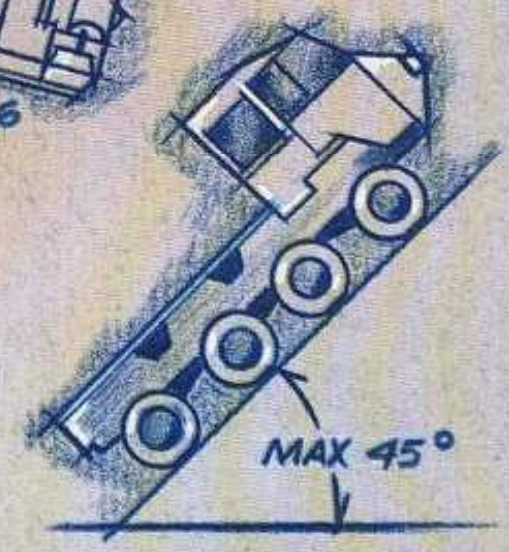
MAXIMUM TILT



TURNING CIRCLES 8x8 6x6



ANGLE OF APPROACH & DEPARTURE



MAXIMUM GRADE



STEWART & STEVENSON SERVICES, INC.  
WORLD HEADQUARTERS  
PO BOX 1637  
HOUSTON, TEXAS 77251-1637  
(713) 868-7700