

# ARDCO INDUSTRIES

World-wide Suppliers of  
Off-road Vehicles, Drills,  
and Specialized Equipment.



Since 1954 ARDCO has produced thousands of vehicles, drills and specialized equipment for use around the world.

ARDCO has vehicles designed to float by the buoyancy of their tires and others designed to haul loads up to 100,000 pounds (45,000 kgs).

Kelly drive or top drive, conventional or special, ARDCO builds the driller's rig.





## MODEL J-4x4

The J-4x4 is a four wheel drive, off-road vehicle with a rigid frame and front wheel steering, designed to haul loads up to 10,000 pounds (4,545 kgs). The frame layout and steering are similar to that used on conventional trucks and provides an excellent carrier for long, bulky loads such as drills with masts that extend the full length of the vehicle when lowered to the traveling position. The rear axle of this vehicle is firmly mounted to the frame while the front axle is pivot mounted, which allows the front wheels to move up and down when traveling over irregular terrain without uneven tire loading or frame twist.

The light but strong construction makes the ARDCO J-4x4 especially suited for soft terrain and, when equipped with Terra tires, is usually amphibious without special flotation tanks. A wide choice of optional components and accessories allows the customer to tailor the J to his specific job.



## MODEL K-4x4

ARDCO's Model K-4x4 is an articulated steering, frame oscillating, four wheel drive vehicle designed to haul loads to 10,000 pounds (4,545 kgs). Both axles on the Model K are firmly mounted to the heavy duty frame. In essence, there are two frames (front and rear) connected by the articulated/oscillating joint. The steering is accomplished by bending the vehicle about the vertical centerline

of the articulated joint up to 45 degrees. The oscillating or roll feature allows the two frames, with their respective axles and tires, to oscillate or roll about the horizontal centerline up to 20 degrees. This design applies nearly equal pressure on all four tires regardless of how rough the terrain and makes the Model K-4x4 a very short turning, sure-footed vehicle extensively used world wide by the geophysical industry. From the high Artic to the Sahara and from the Rocky Mountains to the Atchafalaya Swamp, this off-road vehicle will get men and equipment to their work.

The simplicity of its basic design and a wide selection of options makes the Model K-4x4 easy to adapt to meet almost any off-road hauling requirement.

The simplicity of its basic design and a wide selection of options makes the Model K-4x4 easy to adapt to meet almost any off-road hauling requirement.







## MODEL L-4x4

ARDCO's Model L-4x4 is very similar in design to the Model K-4x4, except more compact. With a standard 92-inch (2.3 meters) wheel base and an overall width of just 84 inches (2.1 meters), the Model L-4x4 moves through heavily wooded areas with ease, doing little or no timber damage. Like all ARDCO vehicles, wheel base and overall length can be varied from the standard dimensions in order to best accommodate the particular load. The conservative 4,000 pound (1,818 kgs) payload rating is adequate for many applications such as hauling seismic recording cable and phones, survey crews, shooting crews, light drills, maintenance equipment, welding equipment, bore-hole logging equipment and backhoes. Ford gasoline engines are standard in the Model L-4x4 as well as in the bigger J and K-4x4s, but all are also available with various make diesel engines (both liquid and air cooled). If ARDCO's list of standard options is not adequate to meet the requirements, ask for special equipment; it is probably available.



**ARDCO Rents Equipment World Wide.**

**Check With ARDCO About Our Lease-Purchase Plan.**

## MODEL N-6x6

ARDCO's Model N-6x6 is an articulated steering six wheel drive, off-road vehicle designed to haul loads to 40,000 pounds (18,180 kgs). An important factor in the design of any good off-road, rough terrain vehicle is to make sure each tire supports its part of the load. If this is not accomplished, heavily loaded tires will dig in or break through soft ground and on hard areas induce excess stress on tires, drive line components, and structural members of the frame. ARDCO combines the use of frame oscillation and walking-beam tandem-axle suspension to achieve a superior design.

A wide variety of engines (to 300 hp), cabs, tires, winches, oil field decks, drills, and other specialized equipment is available to custom tailor the ARDCO Model N-6x6 to the needs of the mining, pipeline, exploration, utility and construction industries.







## MODEL K-10x10

## MODEL N-10x10

ARDCO offers two series of 10x10s for moving bulky or very heavy loads. The K-10x10 is constructed using standard K Model components and is designed to carry bulky loads weighing up to 40,000 pounds (18,180 kgs), while the N-10x10, built around standard N Model components, is designed to

carry loads up to 100,000 pounds (45,000 kgs). In each series, a 6x6 tractor is combined with a trailer having its own engine and power train. All trailer controls are conveniently located in the tractor cab; however, the tractor 6x6 portion can be operated independently of the trailer when moving smaller loads and utilizing its gin poles for loading and positioning machinery.

The combination of an articulated steering tractor, a fifth wheel trailer and the ability to operate either the tractor or trailer

engines independently of the other, makes the job of precisely spotting equipment on a rig site relatively easy, even for an average operator.

## MODEL K-6x6

The ARDCO Model K-6x6 is an articulated steering, six wheel drive, off-road vehicle designed to haul loads to 20,000 pounds (9,090 kgs). Similar in design to the ARDCO N-6x6 described on Page 3, it utilizes many components which are interchangeable with those used on the K-4x4. This vehicle is ideal for use where larger or bulkier loads are to be hauled or where reduced ground pressure is desired, especially when used on operations in which ARDCO Model K-4x4s are used.

A wide variety of engines, transmissions, tires and cabs are available. For example, ARDCO offers two and four passenger forward mounted cabs and three and five passenger center mounted cabs. It is easy to tailor make the ARDCO Model K-6x6 for most job requirements.





## MODEL B-250 DRILL

Model B-250 is designed for shallow drilling of pattern seismic shot holes. The usual depth is 10 feet (3 meters), but with a mast extension, holes to 15 feet (4.5 meters) may be drilled. The driver moves to the shot point, drills the auger down, pulls it out, and drives on without getting off the vehicle. This hydraulic top-head drive rig requires no previous drilling experience in order to achieve maximum production. *It is inexpensive and effective!*



Originally ARDCO was in the seismic equipment rental and contract drilling business. At that time it purchased drills from other companies for rental and contract drilling operations. In order to obtain a product that would stand up and make a good profit in the rental and drilling business, ARDCO modified the drills it purchased. Later the Company began manufacturing drills for its

sole use. With substantial drilling experience, and the knowledge that a little extra spent in building a quality product will pay good dividends later by reducing down time and repairs, ARDCO builds its drills for greater longevity.



## MODEL C-1000 DRILL

The Model C-1000 is a hydraulically driven top-head rotary drill capable of drilling to 750 feet (225 meters). It is extremely fast when drilling the typical seismic shot holes to a depth of 100-200 feet (31-62 meters). The C-1000 can be mounted on off-road rubber tired vehicles, track vehicles, conventional trucks or pontoons. This versatile drill can be equipped with centrifugal or positive displacement mud pumps and/or screw or reciprocating air compressors. It can also be set up to run auger stem and/or conventional drill pipe. Generally the ARDCO C-1000 will equal the penetration rate of drills weighing and costing up to three times as much when drilling hard rock formations with down hole air hammers.

**ARDCO**  
INDUSTRIES



## M SERIES DRILLS

ARDCO manufactures a line of Kelly drive, mechanically driven drills designated as:

- Model M-500
- Model M-1000
- Model M-1400
- Model M-1500
- Model M-2000

These drills are of varying sizes and capacity; basic depth capacity is denoted by the model number; for example, 500 for 500 feet, 2000 for 2,000 feet. A large variety of standard and optional components are available to customize each specific model to the customer's needs. For water well drilling, mineral exploration, engineering studies, seismic exploration and shallow oil and gas prospects, ARDCO can furnish M series drills for almost any job. Generally, M series drills are mounted on standard highway type trucks; they can also be mounted on ARDCO-type rubber tired off-road vehicles, track vehicles, and trailers.

ARDCO can also furnish major components and repair parts for other make rigs as well as perform major remounting and refurbishing services. ARDCO maintains a complete stock of drilling expendables and supplies.

**ARDCO Has Seismic and Drilling Supplies.**

**Call on ARDCO For All Your Drilling Needs.**



## MODEL E-750 DRILL

The Model E-750 Drill is a light weight drill suitable for drilling to a depth of 300 feet (90 meters) in soft material and is usually mounted on barges, pull boats or amphibious vehicles.

## SPECIALIZED DRILLS

ARDCO can manufacture drilling equipment for a variety of specialized jobs. Shown are two double-auger air gun drills which are used to position ARDCO's Seis-Mo-Jet™ Guns up to 15 feet (4.5 meters) into the ground, mud or water. Standard components, creatively packaged, solve special problems.





## AIR GUNS AND COMPRESSORS

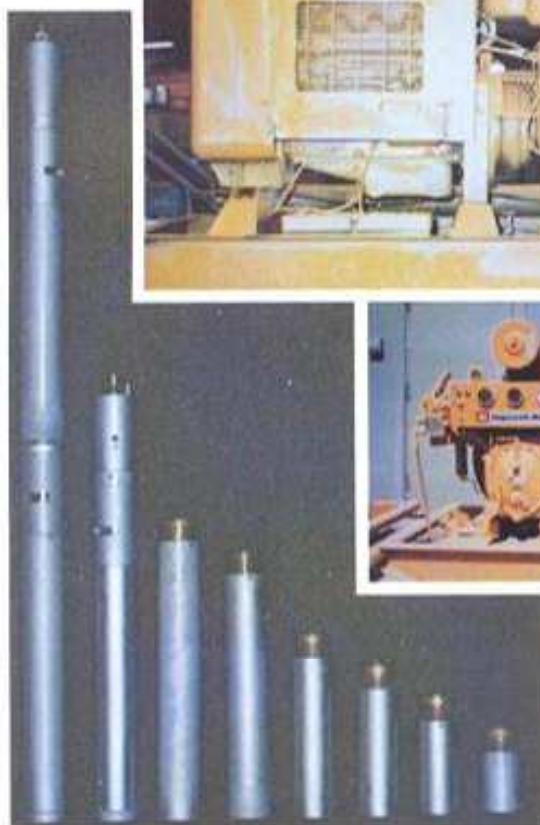
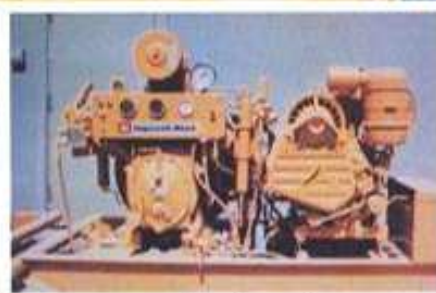
ARDCO's Seis-Mo-Jet™ Air Guns, for their size and weight, are the most powerful pneumatic seismic signal generators on the market.

Two models, the SP (single port) and the DP (double port), are available. A simple device with only a few moving parts, with total interchangeability between SP and DP models and a wide selection of air receiver sections makes it easy to field the right guns for the job. With the ability to operate at less than 2,000 PSI or up to 6,000 PSI and with a wide variety of gun sizes from 30 to 320 cubic inches, it is easy to shoot a single gun, a pattern or a tuned array.

The Seis-Mo-Jet™ Air Guns use a design which allows the gun to work successfully in deep water, shallow water, and mud. By closing the discharge ports at approximately one-half the original shooting pressure, it conserves air and prevents foreign materials from getting

into the gun — there is no reduction in seismic signal.

ARDCO offers two compressor packages for use with the Seis-Mo-Jet™ Air Guns. The Model 15HT4 delivers 21 cu. ft./min. of free air at 5,000 PSI and is primarily used in velocity surveys. The Model 6R80/100 delivers 100 cu. ft./min. of free air at 6,000 PSI and is used for seismic surveys.



## BARGES, PONTOONS AND SPECIALIZED EQUIPMENT

ARDCO designs and manufactures specialized barges and pontoons for use in the seismic industry. These items can be constructed from aluminum or steel depending on the customer's preference and requirements. ARDCO also designs and manufactures a wide variety of trailers and accessories for use with its drills and vehicles. Have a special requirement? — Call on ARDCO.



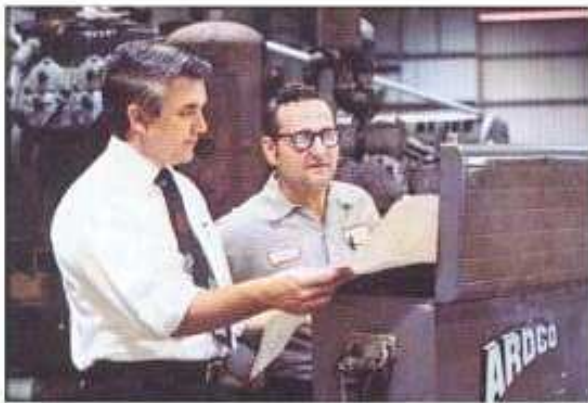
## TIRES

ARDCO provides a wide variety of tires and wheels from which to choose. Those shown are only a representative part of what is available. For reference, the tire on the extreme left is 66 inches in diameter and 68 inches wide — the one on the extreme right is 43 inches in diameter and 18 inches wide.



**ARDCO**  
INDUSTRIES





Let ARDCO's experienced team  
serve you anytime, anywhere.



This brochure gives an overview of the products offered by ARDCO at the time of printing; but because ARDCO has an ongoing policy of expanding and improving its products and services, please contact an ARDCO representative for complete, up-to-date information on any specific product or service.

**ARDCO INDUSTRIES, INC.**

322 Riley Road  
Houston, Texas 77047  
U.S.A.

Phone: 713/433-6751  
Telex: 775017

**ARDCO INDUSTRIES, LTD.**

4121 50th Avenue  
P.O. Box 400  
Stony Plain, Alberta T0E 2G0  
CANADA

Phone: 403/963-5110  
Telex: 0373520

PLEASE CONTACT EITHER OF THE ABOVE FOR THE NAME AND LOCATION OF THE NEAREST SALES OR SERVICE REPRESENTATIVE.

**ARDCO**  
INDUSTRIES