



 **MODEL 'N'**

## **EXTRA HEAVY DUTY TRANSPORTER**

The ARDCO Model 'N' vehicle is available to respond to situations where extremely heavy loads must be transported over off road conditions. This unit is designed with articulated steering, planetary axles, six powered wheels and an extra heavy duty trunion.

The 6 x 6 with its increased load capacity of 40,000 Lbs. or the 4 x 4 with a load capacity of 20,000 Lbs. sacrifices no maneuverability to its increased payload. The vehicle may be equipped with a forward or center mounted all weather cab insulated for sub-zero conditions.



The Model 'N' can be used as a drill carrier as shown above or as a fuel tender as on the left. Other uses in various industries such as a cable carrier for mining applications demonstrate ARDCO's ability to adapt the Model 'N' to your requirements.



**EXTRA HEAVY DUTY FRAME & TRUNION**

**DISC WHEEL BRAKES**

**ARTICULATION/OSCILLATION**

**ALL WEATHER OPERATION**

# SPECIFICATIONS

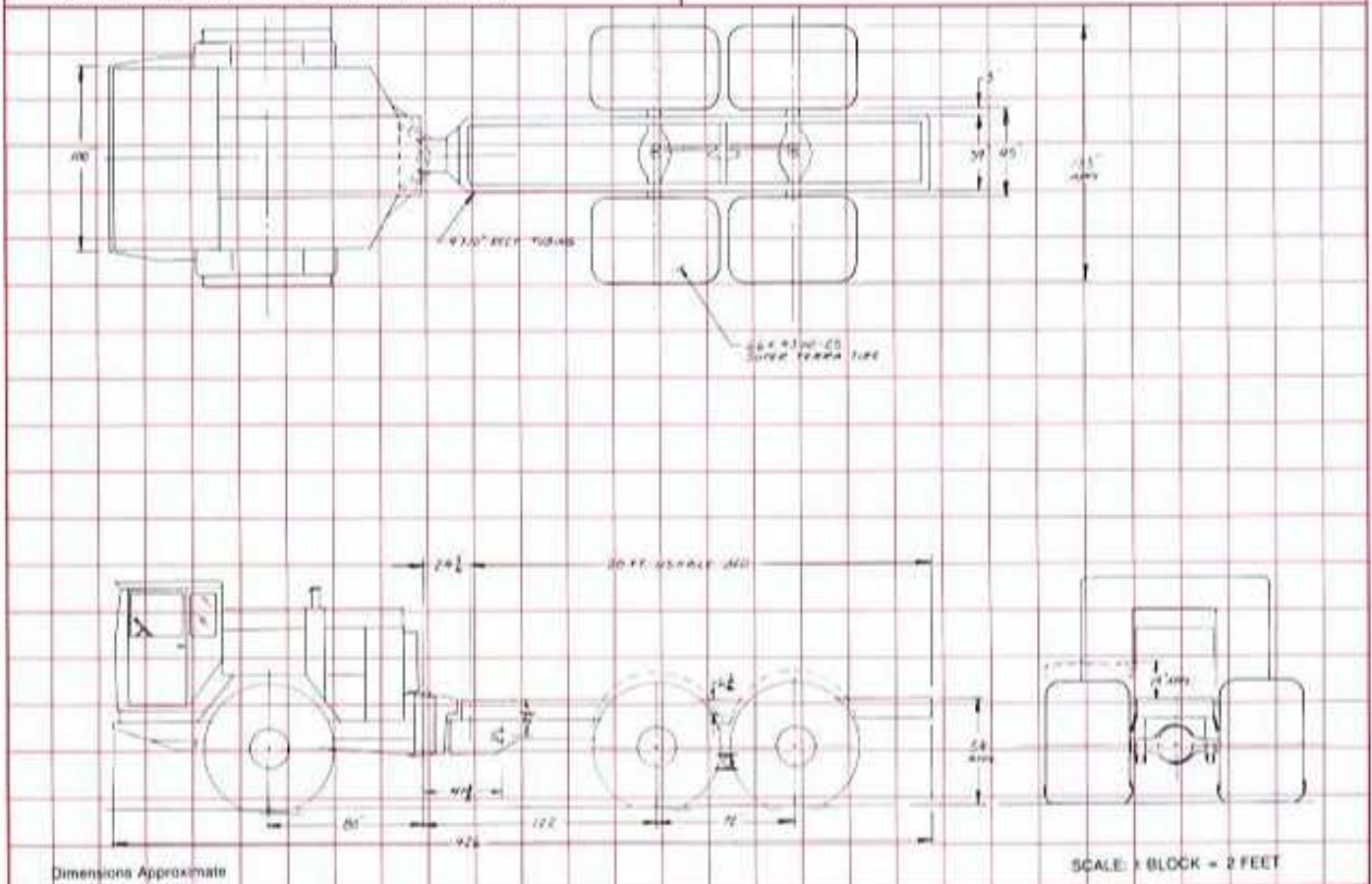
## MODEL 'N' 6 x 6

**PAYLOAD:** 40,000 Lbs. (with 23.1 x 20-26 tractor tires).  
**GVW WITH PAYLOAD:** 70,000 Lbs.  
**AXLES:** Rockwell planetary.  
**BRAKES:** Disc wheel brakes (hydraulic).  
**STEERING:** Double cylinder, articulated  $\pm 37^\circ$ .  
**TURNING RADIUS:** Inside 35'; 42' approx.  
**OSCILLATION:**  $\pm 20^\circ$ , front axle rigid mounted to frame, tandem rear axle walking beam.  
**ENGINE:** DD 8V71, 263 BHP @ 2,100 RPM.  
**GEAR TRAIN:** Allison HT 750 with transfer case.  
**WIDTH:** 133" (11'1") with 66 x 4300-25 tires.  
**HEIGHT:** 117" to top of cab (9'9").  
**LENGTH:** 426" (35'6").  
**GROUND CLEARANCE:** 24".

Specifications subject to change without notice (other options available)

## MODEL 'N' 4 x 4

**PAYLOAD:** 20,000 Lbs. (with 23.1 x 20-26 tractor tires).  
**GVW WITH PAYLOAD:** 38,000 Lbs.  
**AXLES:** Rockwell planetary.  
**BRAKES:** Drive line mounted disc (optional disc wheel brakes).  
**STEERING:** Double cylinder, articulated  $\pm 37^\circ$ .  
**TURNING RADIUS:** Inside 8'1"; 16'4" approx.  
**OSCILLATION:**  $\pm 20^\circ$  between front and rear frame.  
**ENGINE:** DD 8V71, 197 BHP @ 2,100 RPM.  
**GEAR TRAIN:** Allison MT 644 with transfer case.  
**WIDTH:** 133" (11'1") with 66 x 4300-25 tires.  
**HEIGHT:** 117" to top of cab (9'9").  
**LENGTH:** 240.5" (20'1/2").  
**GROUND CLEARANCE:** 24".



322 Riley Road • Houston, TX 77047  
 (713) 433-6751 • Telex: 775017 ARDCO

Office and Plant Locations:

Stony Plain, Alberta, Canada; Lafayette, Louisiana;  
 Laurel, Mississippi; Longview, Texas