



FWD WAGNER FARM TRACTORS

STEP UP TO POWER

GET A TRACTOR WITH PULL

FWD WAGNER INC.



Model WA-4—125 H.P. Farm Tractor



Model WA-9—160 H.P. Farm Tractor



Step UP to FWD WAGNER and into a

Many farmers today who are taking stock of their tractors are finding *they have too many*. If you have a multiple tractor operation, then consider this . . .

Consolidate your horsepower requirements in an FWD Wagner

This can be a profitable step *up* for you. Investigate the economy of consolidating your horsepower requirements in an FWD. Even the smallest of the line, the WA-4, is large by comparison with conventional tractors. You'll find the entire Four Wheel Drive lineup . . . the WA-4, WA-9, WA-14, WA-17 . . . delivering more *usable* horsepower, more *pull* power than any other tractor of comparable engine horsepower.

Higher production at lower cost

A big FWD Wagner 4-wheel drive tractor outproduces two or more large 2-wheel drive tractors and, at the same time, cuts costs.

An FWD Wagner can reduce your:

- | | |
|-------------------------|-----------------|
| 1. Investment | 4. Maintenance |
| 2. Labor costs per acre | 5. Depreciation |
| 3. Fuel costs per acre | 6. Tire wear |

FWD Wagner delivers usable horsepower

Engine horsepower for any tractor is merely a statistic until it's put to work. That's where FWD Wagner tractors really get the job done. FWD Wagner has long known that horsepower can be put to maximum use *only* when it is equally distributed to four driving wheels of equal size. This is *usable* horsepower—drawbar pounds pull up to 92% of the tractor's weight.

Leadership cannot be copied

FWD Wagner experimentation preceded competition by five years. Competition finally awakened to the fact that FWD Wagner was right all along. Now some are belatedly trying to copy FWD Wagner features. But in product engineering, the company with the head start . . . stays ahead.

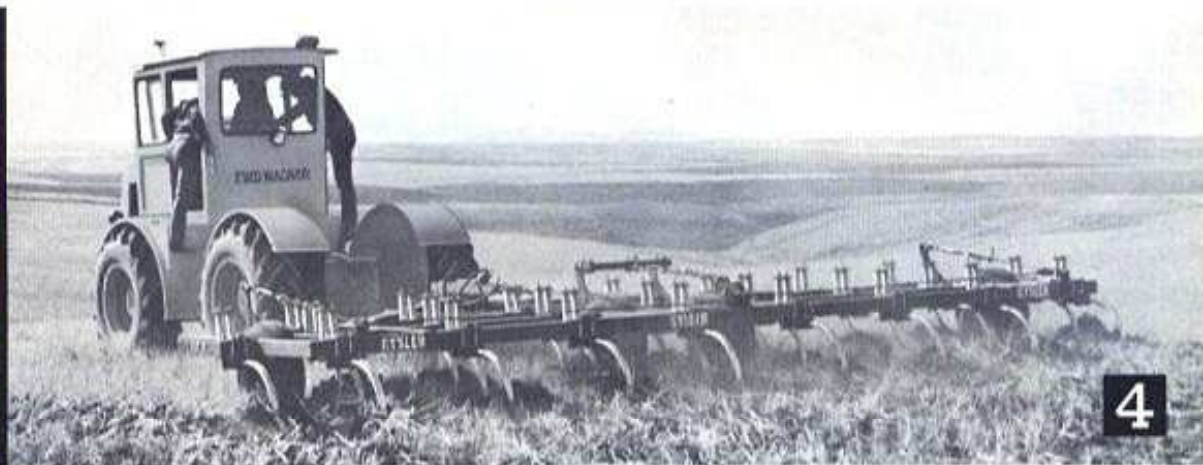
FWD WA



Model WA-14—220 H.P. Farm Tractor



Model WA-17—250 H.P. Farm Tractor



new concept of Farm Tractor Power

1 WA-4—a versatile 125 h.p. farm tractor, shown with land plane—just one of the many plowing, discing, seeding, land leveling or terracing jobs this line handles with ease. The WA-4 really harnesses horsepower to pull disc harrows or field cultivators that are WIDE and then some.

2 WA-17—this 250 h.p. giant is engineered for maximum production. The operator rides high and safe above dust and dirt. Optional full-vision cab and fully equipped instrument panel offer new highs, too, in comfort and convenience. Here is big crawler tractor power mated — with rubber tire speed and economy.

3 WA-9—160 h.p.—double production from a single unit. Full four-wheel power, center-pin hinged steering and two-axle oscillation combine to keep every wheel in there pulling, even on rough terrain or other adverse ground conditions. The perfect replacement for two conventional 2-wheel drive tractors.

4 WA-14—220 h.p. FWD Wagner tractors on large acreage farms reduce manpower and cut costs. High speed handling of multiple implement combinations. Out-produces crawler tractors of comparable horsepower by 20 to 50%.

Comfort is standard equipment on FWD Wagner tractors

"Extras" on many other tractors are standard with FWD Wagner. Standard equipment includes power steering with independent hydraulic pump, swinging drawbar, deluxe high-power lights front and rear, full width dust-control

fenders—(all wheels), foot accelerator and muffler. Optional deluxe full-vision cabs, heater, defroster and other accessories available to tailor each unit to your requirements.

Operating features that keep FWD Wagner ahead...for YOU

Four Wheel Drive

More horsepower developed into pull power—up to 92% of tractor weight in drawbar pounds pull. Sure-footed power and traction is combined with rubber-tire speed and mobility.

Diesel Power

Dependability and economy proven by thousands of hours of field operations.

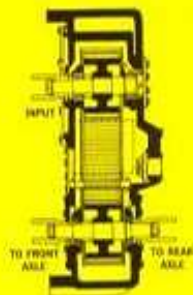
2-Axle Oscillation



Wheels are always on the ground, always in there pulling... whether crossing ditches or dead furrows... on rough terrain, and reducing tire slippage and the resulting wear to a minimum.

Center pin Pow-R-Flex steering

FWD Wagner tractors are hinged to "turn in the middle." Wheels always track. Power preserved in turns.



Power Divider

Exclusive FWD power divider provides positive drive to front and rear axles. Rugged—simple—efficient.

Fully-equipped Instrument panel

All controls and indicators are conveniently grouped directly in front of operator for convenience, efficiency and safety.



FWD WAGNER INC.

4427 N. E. 158th Avenue • Portland 30, Oregon • P. O. Box 7444 • ALpine 2-5531

Subsidiary of FWD CORPORATION, Clintonville, Wisconsin • Canadian Factory: Kitchener, Ontario