



New...FWD WAGNER TRACTOR

MODEL WA-4

125 H.P. FARM TRACTOR



NEVER
BEFORE
A TRACTOR
LIKE THIS!
Model WA-4
FWD
WAGNER
FARM TRACTOR

*Power adjusted
wheels and
3 point
hitch optional



Here is the newest member in the FWD Wagner tractor family, strong as an elephant, agile as a tiger.

FWD Wagner's new model WA-4 is a compact machine for large farm work. The WA-4's 125 horsepower is transferred into more *pull* power than any other farm tractor of comparable engine horsepower. In recent years there has been a horsepower race in the tractor industry. Each company has tried to match the published horsepower ratings of competitors.

**FWD WAGNER DELIVERS
USABLE HORSEPOWER**

Engine horsepower is merely a statistic—until it is put to work. That's where the WA-4 really gets the job done. FWD Wagner has long known that increased horsepower can be converted to *usable* horsepower only when it is equally distributed to four driving wheels of equal size.

FWD Wagner pioneered the 4-wheel drive, center-pin hinged steering and free oscillation of both axles. These features are combined in the WA-4 to provide maximum ground contact and power on all terrain. Wheels are *always* on the ground whether crossing ditches or dead furrows. Power in turns is equivalent to straightaway pull power. It all adds up to usable horsepower — drawbar pounds pull up to 92% of the tractor's weight!

With properly matched implements the WA-4 can outpull crawler tractors or 2-wheel "blacksmith" conversions of comparable engine horsepower by 20 to 50 percent. 32 feet of tandem disc harrow with 500 pounds of weight have been handled with ease, 24 feet of tool bar equipped

LEADERSHIP CANNOT BE COPIED

FWD Wagner experimentation preceded competition by five years. Competition finally awakened to the fact that FWD Wagner was right all along. Now some are belatedly trying

to copy FWD Wagner features, but it will be difficult to catch up. Our mistakes are behind us. In product engineering, the company with the head start . . . stays ahead.

with duck foot points is "duck soup" —even in heavy soil conditions.

**OPERATOR COMFORTS
STANDARD EQUIPMENT**

The WA-4 is human engineered for maximum operator comfort. Extras on other tractors are standard equipment on the WA-4. Operator rides high and safe up out of the dust and dirt. Your only limit on visibility is the tire in the furrow. No neck craning or twisting. Your fully equipped instrument panel is compact and right before your eyes.

Other conveniences which are standard on the WA-4 and every FWD Wagner tractor: power steering with independent hydraulic pump, independent hydraulic power for implements, swinging drawbar, deluxe lights front and rear, full-width fenders all 4 wheels, foot accelerator, muffler.

FOUR WHEEL DRIVE

More horsepower developed into *pull* power, 92% of tractor weight in drawbar pounds pull! Minimum slippage on all ground and grade conditions. In light, sandy soil, FWD Wag-

ner 4-wheel drive advantages are even more pronounced.

2-AXLE OSCILLATION

Every wheel is always in there pulling . . . even on rough terrain, loose footing, slopes.



**CENTER HINGE POWER
STEERING**

FWD Wagner tractors are hinged to "turn in the middle" . . . operate as easily and as fast as your car. **WHEELS ALWAYS TRACK.** Power preserved in turns.



PLANETARY DRIVE

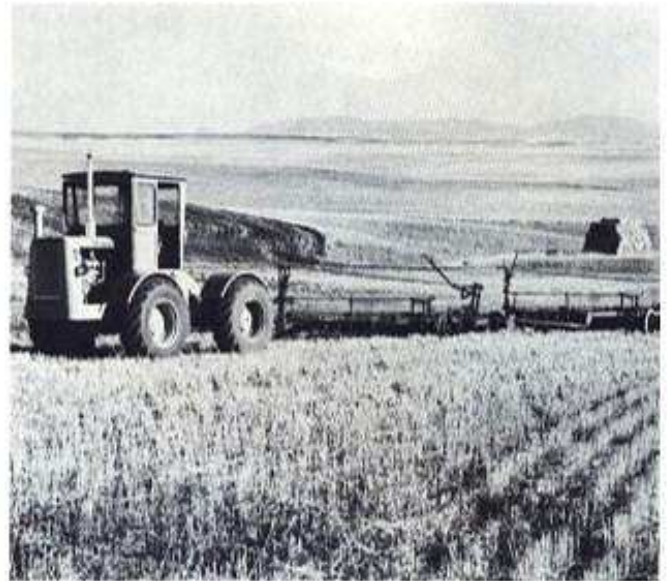
Places gear reduction at extreme end of power train. Minimizes tire spin and wear. Insures long transmission and differential life.

**RUBBER TIRE SPEED
AND MOBILITY**

Sure-footed power and traction without high crawler maintenance and replacement costs.



WA4 with 24' field cultivator



WA4 with 32' of one-way disc

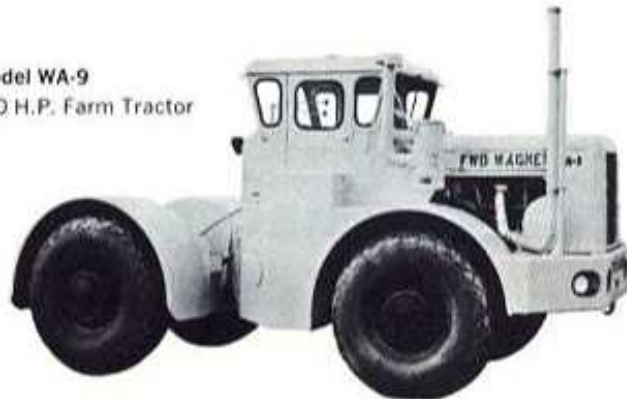
The Big Tractor Lineup with PULL POWER...

FWD WAGNER: The tractor line that starts where others leave off! FWD Wagner—the line that was "Firstest" . . . and still has the "Mostest" in operating features.

FWD Wagner was the first truly successful 4-wheel drive, 4-wheel steering tractor with free oscillation of both axles. Still years ahead.

Here is big tractor performance for the big pull . . . with rubber tire speed and economy. It's the big tractor lineup for higher production . . . lower operating costs.

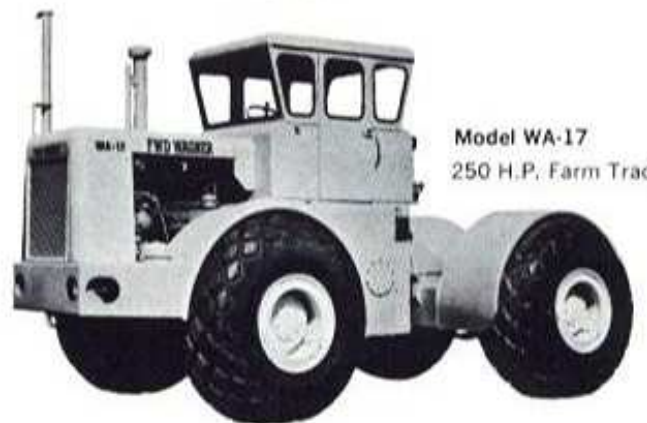
Model WA-9
160 H.P. Farm Tractor

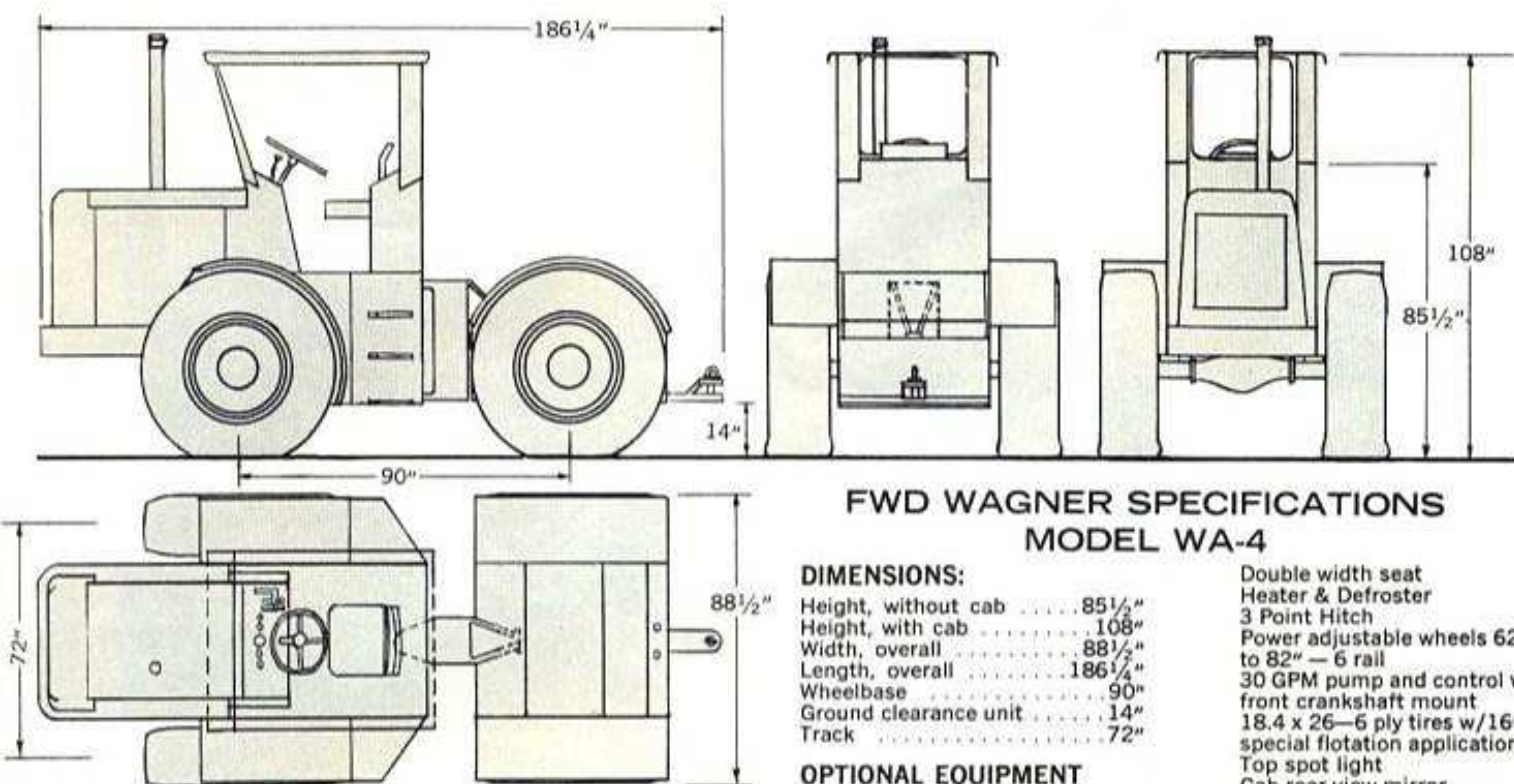


Model WA-14
220 H.P. Farm Tractor



Model WA-17
250 H.P. Farm Tractor





FWD WAGNER SPECIFICATIONS MODEL WA-4

DIMENSIONS:

Height, without cab	85 1/2"
Height, with cab	108"
Width, overall	88 1/2"
Length, overall	186 1/4"
Wheelbase	90"
Ground clearance unit	14"
Track	72"

Double width seat
Heater & Defroster
3 Point Hitch
Power adjustable wheels 62" to 82" — 6 rail
30 GPM pump and control valve front crankshaft mount
18.4 x 26—6 ply tires w/16" rims special flotation applications
Top spot light
Cab rear view mirror
Cigarette Lighter
Super Grip Goodyear Terra-Tires

OPTIONAL EQUIPMENT

Cab w/top insulation, blower fan and dome light

TRANSMISSION SPEEDS 2500 R.P.M.

Gear	M.P.H.
1	1.6
2	2.39
3	3.44
4	4.79
5	6.70
6	9.48
7	13.38
8	18.29
R1	1.69
R2	6.21

ENGINE:

Make G.M. Diesel
Model 4-53 (2-cycle)
Number cylinders 4
Bore and stroke 3 7/8"x4 1/2"
Displacement 212.3 cu. in.
Maximum horse-power at
RPM 125 @ 2500
Electric system . . . 12 volts
Fuel tank capacity . 50 gal.
Cooling system capacity 23 qts.
Road speed—maximum . . . 18.29 M.P.H.

POWER TRAIN:

Maximum torque foot pounds 274 @ 1800
Clutch, single plate . . . 14"
Transmission, Fuller . R-46
Transmission, speeds . . . 8 fwd., 2 rev.
Planetary drive . . . 4-wheel
Power divider (make) . . . FWD Wagner
Power divider . . . Chain type
Valves, implement . . . double spool
Axles (drive) . . . planetary
Axles (driving) . . . 4 wheels
Axle oscillation 15°
Chassis steel

ACCESSORIES—STD.

Lights, 2 front, 1 rear
Full width fenders
Hand throttle
Foot throttle
Hour meter
Swinging Roller Drawbar
Muffler

HYDRAULIC SYSTEM

Implement control
Pump capacity 25 G.P.M. @ 2500
Valves—2 spool std.
Steering independent center hinge

WEIGHTS:

Standard equipment—approximate 10,000 lbs.
With hydroflated tires, approximate add 3,000 lbs.

TIRES:

16.9 x 26—6 ply with tread options

BRAKES:

(4-wheel) hydraulic

Design and specifications subject to change without notice



4427 N. E. 158th Ave. • Portland 30, Oregon • P. O. Box 7444 • Alpine 2-5531

Subsidiary of FWD CORPORATION • Clintonville, Wisconsin • Canadian Factory: Kitchener, Ontario