

FOBI / RBI
 Apt Elev **174'**
 S01 56.56.0 E009 52.70'



SOLENTA AVIATION

10-juil-10 **10-Q**

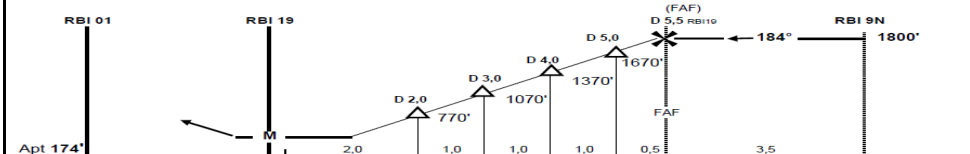
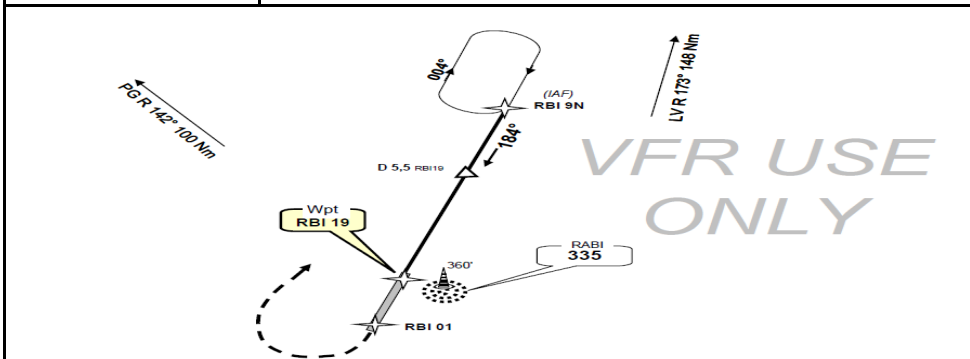
Rabi, Gabon

1800'

Rabi Info	SHELL OPS	Auto Info
119,00	128.70 VHF / 8970 HF	118,10

Final Approach Course **184°**
 and **004°**

Missed Approach: Climb straight ahead to 1500 feet (VMC) or 1800 feet (IMC)



RBI 19	S 01° 56.56' / E 009° 52.70'					
RBI 9N	Radial 004° from RBI 19, 9NM					
RBI 01	S 01° 57.25' / E 009° 52.72'					
Gnd speed-Kts	70	90	100	120	140	160
Descent gradient 5.0%	350 fpm	450 fpm	500 fpm	600 fpm	700 fpm	800 fpm
FAF at Mapt	4:54	3:52	3:29	2:54	2:29	2:10

ADDITIONAL RUNWAY INFORMATION

B1900D			USABLE LENGTHS			
FLAP 17			LANDING BEYOND			
RWY	TEMP	RTOW	Threshold	Glide Slope	TAKE-OFF	WIDTH
01/19	25°	17120 lbs	4520' 1380m	Nil	4520' 1380m	30m
	30°	17120 lbs				
	35°	17120 lbs				
	40°	17120 lbs				

Variation 4° West

VMC CANPA

1500'

↑

TAKE-OFF	LANDING
Rwys 01 / 19 (DAY VFR Only)	

A B C D	1500 feet Ceiling and 5000 meters visibility / With Takeoff Alternate 500m visibility
Ceiling above GRID MORA of 3500 feet	

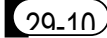
FOBI / RBI



SOLENTA AVIATION

Rabi, Gabon

10-juil-10



Airport Photo

Rabi Info	NAVAIDS - RABI NDB	Apt Elev	Transition level: 028
119,0	335	174'	Transition alt: 1800'